



# 2017 New York Voter Data Analysis

---

**NEW YORK**

163-10 NORTHERN BLVD,  
STE 307

TEL 718 961 4117

FAX 718 961 4603

**NEW JERSEY**

185 BRIDGE PLZ N, STE  
306

FORT LEE, 07024

TEL 201 488 4201

FAX 718 961 4603

Visit us at

**[KACE.ORG](http://KACE.ORG)**



**Korean American Civic Empowerment (KACE)** is a non-partisan, not-for-profit organization, dedicated to empowering the Korean American community through active civic engagement since 1996.

More specifically, KACE is committed to advocating for voting rights, educating Korean American voters, developing civic leadership, contributing to the U.S.-Korea relations, and addressing the issues of the Korean American community to the local, state, and federal governments.

## **Purpose of Analysis**

KACE conducts an analysis of statewide voter data to attain a measure on the current status of Korean Americans' political capability and to gather insight on how to register more Korean Americans to vote.

KACE provides timely and accurate election data analytics of the Korean American community every year.

## **Data Sources**

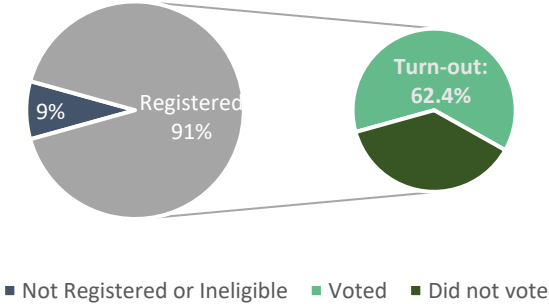
All source data used for analysis come from public information. In this particular analysis, the raw data sets were obtained from the public records collected by the New York State Board of Elections and published on April 1, 2017, and the 2015 American Community Survey (ACS) published by the United States Census Bureau.

## **Filtering Korean American Voter Data**

Through a proprietary algorithm developed by KACE, the voter data for Korean Americans is filtered by the voter's first name, last name, names of voters at the same address, and other conditions. All the numbers calculated for Korean American voters included in this report are conservative estimates, as calculated by the algorithm.

# FACT SHEET

## All New York State Voters



<b>Total Population</b>	<b>19,795,791*</b>
<b>Total Registered Voters</b>	<b>12,365,048†</b>
<b>Voting-Eligible Population§</b>	<b>13,531,404‡</b>
<b>Voter Registration Rate</b>	<b>91.4%</b>
<b>Voter Turn-out Rate</b>	<b>62.4%</b>

§NOTE: Eligible voters are U.S. Citizens ages 18 and older.

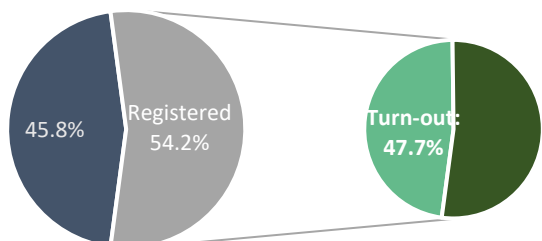
---

\* 2015 American Community Survey, United States Census Bureau

† Accessed May 2017, New York State Board of Elections

‡ % Korean American citizens of % 18 years and older of total Korean American population

## Korean American Voters in New York



■ Not Registered   ■ Voted   ■ Did Not Cast a Ballot

Total Population	<b>138,506*</b>
Total Registered Voters	<b>44,290†</b>
Voting-Eligible Population <sup>‡</sup>	<b>81,916‡</b>
Voter Registration Rate	<b>54.2%</b>
Voter Turn-out Rate	<b>47.7%</b>

<sup>‡</sup>NOTE: Eligible voters are U.S. citizens ages 18 and older.

### Comparison of data collected in April 2016 and April 2017 by the New York State Board of Elections:

- **3.8% decrease** in number of registered Korean American voters
- **15.1% increase** in voting eligible population
- **16.6% decrease** in voter registration rate
- **34.7 percentage point increase** in voter turn-out rate

\* 2015 American Community Survey, United States Census Bureau

† Accessed May 2017, New York State Board of Elections

‡ % Korean American citizens of % 18 years and older of total Korean American population

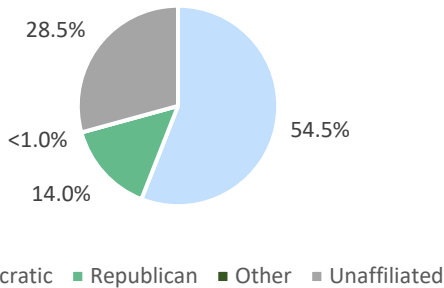
## Korean American Voter Status

A voter is classified as inactive when:

- Individual does not respond to the confirmation notice of address, sent from the Board of Elections (BOE); and
- Mails sent to the individual's home address is returned to the Board of Elections.

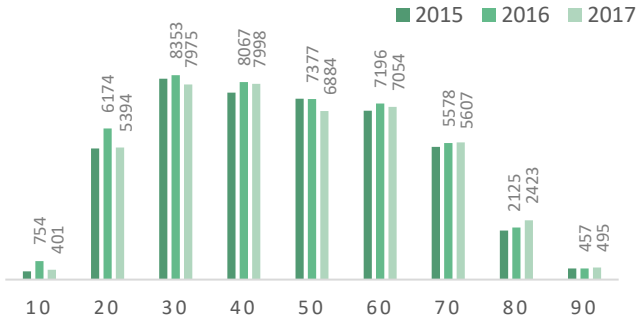
**10.3% of Korean American registered voters** (4,545 voters) are marked as inactive. In comparison to the data obtained from the 2016 Primary Election, inactive status rates have remained relatively the same.

## Korean American Voters by Party Affiliation



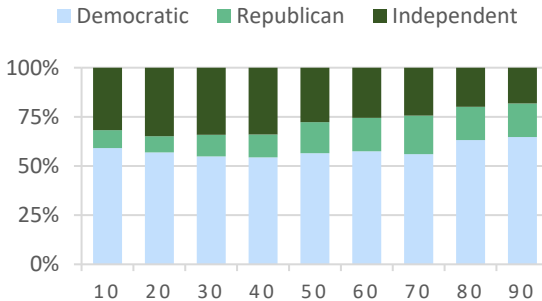
New York State voters may or may not choose to affiliate with a political party. However, affiliation with a party is required to vote in the primary elections. Approximately **54.5%** of Korean American voters identify as a Democrat.

## Korean American Voters by Age Group



The 40s is the largest share of all age groups with a total of **7,998 Korean American registered voters**, followed closely by the 30s, 60s, and 50s age groups.

## Distribution of Party by Age Group



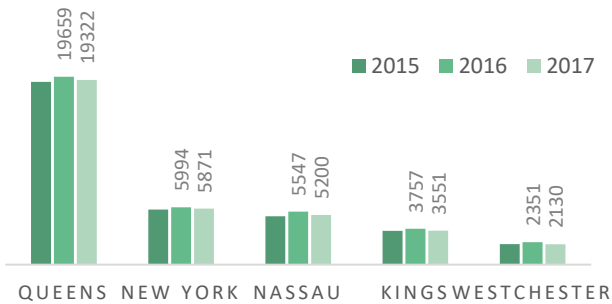
Across all age groups, a significant share of Democratic voters make up the total number of registered Korean American voters. Approximately<sup>†</sup>:

<sup>†</sup> Accessed May 2017, New York State Board of Elections

- **58.1%** of 10s;
- **55.2%** of 20s;
- **52.9%** of 30s;
- **49.7%** of 40s;
- **55.1%** of 50s;
- **56.6%** of 60s;
- **55.2%** of 70s
- **52.3%** of 80s; and
- **64.2%** of 90s age groups are democratic voters.

Across the entire age spectrum, **28.5%** of all Korean American voters enrolled as unaffiliated voters, and **14.4%** of all Korean American voters identify as a Republican.

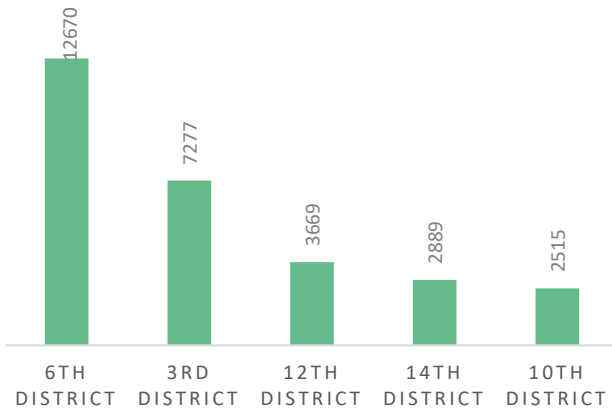
## Korean American Voters by County



Queens County is home to 43.6% of all Korean American registered voters in New York (19,322). Since April 2016, there is a **1.7% decrease**, in the number of Korean American voters registered in Queens County.



## Korean American Voters by Congressional District



28.6% of all Korean American voters in New York reside in New York's **6th Congressional District** (Rep. Grace Meng). The 3rd Congressional District (Rep. Tom Suozzi) is home to 7,277 Korean American voters, the 12th Congressional District (Rep. Carolyn Maloney) to 3,669 Korean American voters, the 14th Congressional District (Rep. Joseph Crowley) to 2,889 Korean American voters, and the 10th Congressional District (Rep. Jerrold Nadler) to 2,515 Korean American voters.

**Korean American voters account for the following percentage of all voters in each congressional district<sup>†</sup>:**

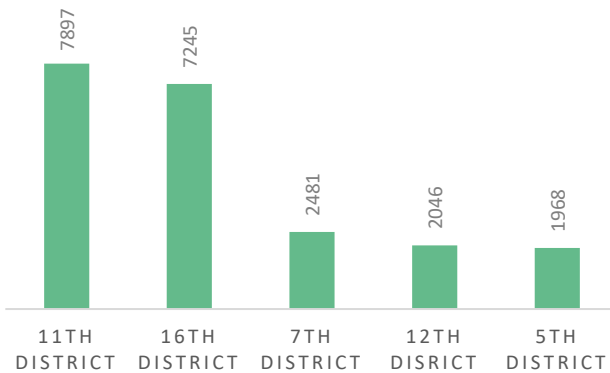
- 6th District- **3.3%** of total registered voters
- 3rd District- **1.4%** of total registered voters

---

<sup>†</sup> Accessed May 2017, New York State Board of Elections

- 12th District- **0.7%** of total registered voters
- 14th District- **0.8%** of total registered voters
- 10th District- **0.6%** of total registered voters

## Korean American Voters by Senate District



New York State’s 11th Senate District (Senator Tony Avella) is home to the largest number of Korean American voters with 7,897 residents. It is followed by the 16th Senate District (Senator Toby Ann Stavisky), 7th Senate District (Senator Elaine Phillips), the 12th Senate District (Senator Michael Gianaris), and 5th Senate District (Senator Carl L. Marcellino).

**Korean American voters account for the following percentage of all voters in each senate district<sup>†</sup>:**

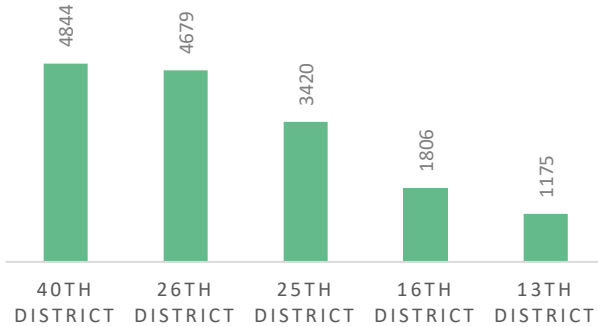
- 11th District- **4.2%** of total registered voters

---

<sup>†</sup> Accessed May 2017, New York State Board of Elections

- 16th District- **4.7%** of total registered voters
- 7th District- **1.2%** of total registered voters
- 12th District- **1.1%** of total registered voters
- 5th District- **0.8%** of total registered voters

## Korean American Voters by Assembly District



New York's 40th Assembly District (Assemblyman Ron Kim) is home to the largest number of Korean American voters (4,844). It is followed by the 26th Assembly District (Assemblyman Edward Braunstein), 25th Assembly District (Assemblywoman Nily Rozic), 16th Assembly District (Assemblyman Anthony D'Urso), and the 13th Assembly District (Assemblyman Charles Lavine).

**Korean American voters account for the following percentage of all voters in each assembly district<sup>†</sup>:**

- 40th District- **9.2%** of total registered voters
- 26th District- **6.2%** of total registered voters
- 25th District- **5.2%** of total registered voters
- 16th District- **2.0%** of total registered voters
- 13th District- **1.2%** of total registered voters

---

<sup>†</sup> Accessed May 2017, New York State Board of Elections

## 8080 Campaign

TEL (718) 961-4117

FAX (718) 961-4603

[info@kace.org](mailto:info@kace.org)

KACE conducts the 8080 Campaign year-round with the goal of increasing **voter registration** and **voter turn-out** rates to 80% in the Korean American community.

KACE provides information and resources to those in need of assistance with voter registration, and for all interested in participating in the 8080 Campaign.

### Voter Hotline

**(347) 766-5233**

KACE operates a voter hotline on election dates to resolve any issues and/or concerns that a voter may face at a poll site.

### Donation

**With your support, we can strengthen our voice, gain visibility, and build our political strength together as a community.** KACE is a registered 501(c)(3) organization with the Internal Revenue Service. Your donations and contributions are tax-deductible.

Please make the check payable to "KACE" and mail to:

**Korean American Civic Empowerment (KACE)  
163-10 Northern Blvd, Suite 307  
Flushing, NY 11358**

**VOTING RIGHTS ADVOCACY.  
VOTER REGISTRATION.  
CIVIC EDUCATION.  
OUR COMMUNITY'S VOICE.**

**KOREAN AMERICAN  
CIVIC EMPOWERMENT  
SINCE 1996.**



**NEW YORK**  
163-10 NORTHERN BLVD,  
STE 307  
TEL 718 961 4117  
FAX 718 961 4603

**NEW JERSEY**  
185 BRIDGE PLZ N, STE 306  
FORT LEE, 07024  
TEL 201 488 4201  
FAX 718 961 4603

Visit us at  
[KACE.ORG](http://KACE.ORG)